

DGM CARTON
CONVERTING
EQUIPMENT

FOLDER GLUERS

MEGAFOLD 1450 / 1650 / 1850

www.dgm-global.com

Folder gluers

MEGAFOLD

1450 / 1650 / 1850



High speed automatic folder gluer

MEGAFOLD C

Without pre-folding section suitable for straight-line boxes.

MEGAFOLD AC

Without pre-folding section suitable for straight-line, crash-lock bottom & double wall boxes.

MEGAFOLD PC

Suitable for straight-line, crash-lock bottom & double wall boxes.

MEGAFOLD SL

Suitable for straight-line, crash-lock bottom, double wall, 4 & 6-corner boxes.



General description

MEGAFOLD Perfect solution to work with medium and large sized boxes in the heavy packaging industry. With high productivity, it offers the flexibility to run thin solid board to thick corrugated carton.

- Modular design allows different configurations, to meet customer's needs.
- Wide range of accessories that allows to run thousands of designs.
- Fast, steady and precise machine, easy to set up and operate.
- All sections with independent servo-motor driving system.
- Motorized carrier movement with high precision linear guides.
- Memory function to save repetitive jobs.

MATERIALS

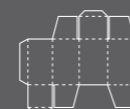


Carton board

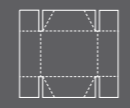


Corrugated board

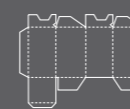
BOXES



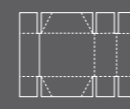
Straight line



4 - corner box

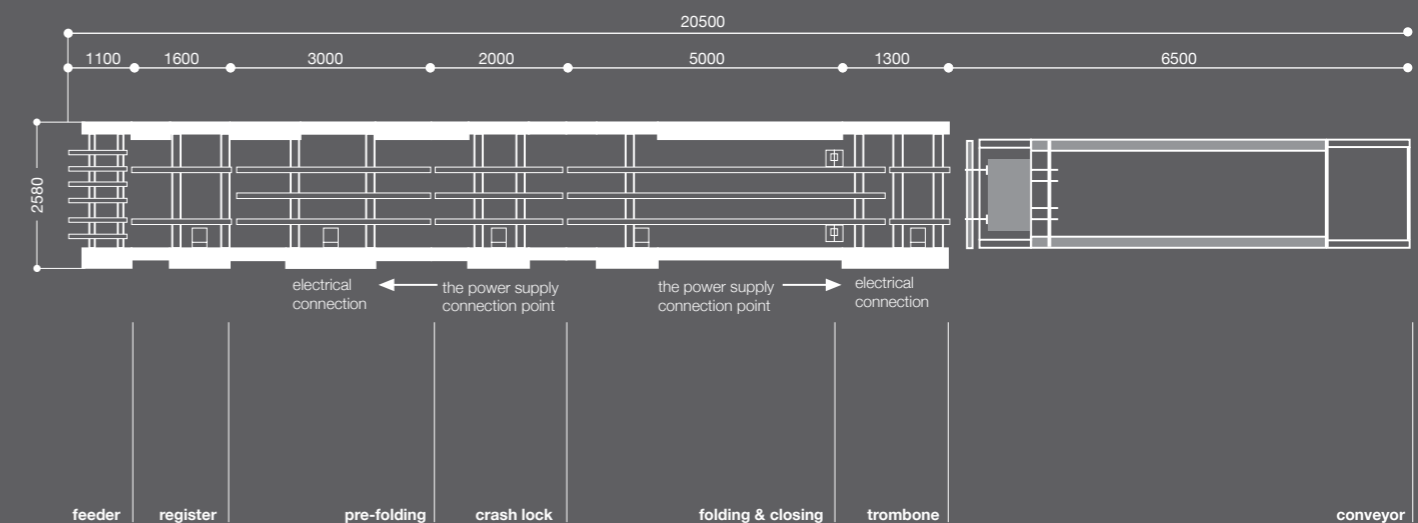


Lock - bottom box



6 - corner box

SCHEME MEGAFOLD 1850 SL



COMPONENTS



Feeder section

- Friction feeder. Independently driven by servomotor.
- Adjustable electronic pile vibrator.
- Lateral feed gates fully adjustable to the width of the blank.
- (3) Three adjustable front feed knives with bogies and three additional smaller sets.
- (6-8) Six to eight feeder belts including 4 drilled belts for suction function.
- Control panel with touchscreen and buttons for all operations.
- Extendable rear pile support for long boxes.



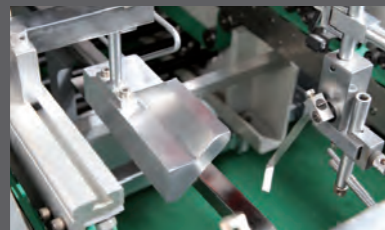
Side register section

- Independent section that registers the blank to one side ensuring a perfect parallelism before entering the pre-folding or gluing sections.
- Independently driven by servo-motor.
- Possibility to register on any side of the machine.
- Fast and easy setup.



Pre-folding section

- Independently driven by servo-motor.
- Left hand glue flap pre-folder up to 180°.
- Third crease line pre-folder up to 135°.
- 1st and 3rd crease openers.



Crash lock bottom section

- Independently driven by servo-motor.
- Complete set of folding hooks and helixes for smooth and accurate folding of front flaps.
- Adjustable hook tension.
- Set of accessories for "B" lock bottom.
- Fast and easy setup.



Gluing section

- Standard Electronic upper gluing system, cold glue with 3 guns.
- Other upper gluing system configuration upon request.
- Two lower (left and right) gluing tanks.
- Easy to remove and clean.



Folding and closing section

- Independently driven by servo-motor.
- Smooth and accurate folding of 2nd and 4th creases.
- Outer folding belts adjustable up to 180° with variable speed controlled by two independent servo-motors, L & R side.
- Three sets of upper & lower carriers with 34 mm upper, 50 mm lower and 100 mm outer belts.
- Easy accessibility.
- Mini-box folding device.



Transfer section

- Independently driven by servo-motor.
- Upper and lower drive mechanism for length adjustment.
- Allows a perfect understack or overstack stream of boxes.
- Equipped with automatic belt tension-adjusting system.
- Continuous and automatic box collection mechanism that ensures a neat transfer to the Press section, guaranteeing an aligned flow.
- Pneumatic squaring device for accurate closing of crash lock-bottom boxes.

Squaring device

- Motorized and pneumatic squaring device on press section. Two carriers with transport belts allow a perfect flow of boxes moving to the pressing station.
- Rear stack corrector, that allows to square the boxes while falling on the lower conveyor.



Squaring device in transfer section

- Pneumatic squaring device in transfer section.
- Aluminum plates stop the box while the upper trombone belts correct any deviation on the closing. The box is released after correction.



Press section

- Independently motorized pneumatic press section.
- Manual and Automatic mode (follow up).
- Upper section moves back and forward through a motorized system, allowing different box length.
- 6.5 meters total length with 4 meters of effective pressure.
- Pneumatic pressure regulation.



4 and 6 - corner device

- Motorized and untimed electronic back folding system with intelligent servo-motor technology.
- (2) Two independent servo motors, one for each shaft.
- Versatile and easy to setup.

SPECIFICATIONS

MEGAFOLD series

1450

1650

1850

Processed materials

Carton board max.	1200 gsm	1200 gsm	1200 gsm
Corrugated flute type	E, C, B, AB 3 & 5 layers	E, C, B, AB 3 & 5 layers	E, C, B, AB 3 & 5 layers

Capability

Speed max.	300 m/min	300 m/min	300 m/min
Inching speed	10 m/min	10 m/min	10 m/min
Thickness of folded box max.	20 mm	20 mm	20 mm
Blank width	290 - 1450 mm	290 - 1650 mm	290 - 1850 mm

Dimensions & weight

	C	AC	PC	SL	C	AC	PC	SL	C	AC	PC	SL
Length	15.5 m	17.5 m	20.5 m	20.5 m	15.5 m	17.5 m	20.5 m	20.5 m	15.5 m	17.5 m	20.5 m	20.5 m
Width	2.2 m	2.2 m	2.2 m	2.2 m	2.4 m	2.4 m	2.4 m	2.4 m	2.6 m	2.6 m	2.6 m	2.6 m
Height	1.8 m	1.8 m	1.9 m	1.9 m	1.8 m	1.8 m	1.9 m	1.9 m	1.8 m	1.8 m	1.9 m	1.9 m
Net Weight	12.5 Ton	13 Ton	14 Ton	14 Ton	13.5 Ton	14 Ton	15 Ton	15 Ton	14.5 Ton	15 Ton	16 Ton	16 Ton

Installation

Electrical connected load	39 kW	44.5 kW	50 kW	53kW	39 kW	44.5 kW	50 kW	53kW	39 kW	44.5 kW	50 kW	53kW
Compressed air	6 bar	6 bar	6 bar	6 bar								
Air compressor capacity	30 m³/h	30 m³/h	30 m³/h	30 m³/h								
Air tank capacity	155 L	155 L	155 L	155 L								

Data is not binding.
In order to improve the product, the manufacturer reserves the right to change specifications and features without notice.

BOXES

MEGAFOLD

1450

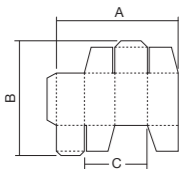
1650

1850

1450

1650

1850

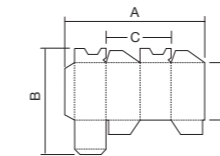


Straight line

A: 290 - 1450 mm
B: 120 - 1200 mm
C: 135 - 710 mm

A: 290 - 1650 mm
B: 120 - 1200 mm
C: 135 - 810 mm

A: 290 - 1850 mm
B: 120 - 1200 mm
C: 135 - 910 mm

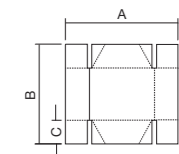


Lock - bottom box

A: 290 - 1450 mm
B: max. 1200 mm
C: 135 - 710 mm
D: min. 80 mm

A: 290 - 1650 mm
B: max. 1200 mm
C: 135 - 810 mm
D: min. 80 mm

A: 290 - 1850 mm
B: max. 1200 mm
C: 135 - 910 mm
D: min. 80 mm

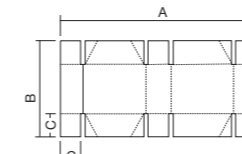


4 - corner box

A: 230 - 1450 mm
B: 150 - 1200 mm
C: 30 - 150 mm

A: 230 - 1650 mm
B: 150 - 1200 mm
C: 30 - 150 mm

A: 230 - 1850 mm
B: 150 - 1200 mm
C: 30 - 150 mm



6 - corner box

A: 350 - 1450 mm
B: 150 - 1200 mm
C: 30 - 150 mm

A: 350 - 1650 mm
B: 150 - 1200 mm
C: 30 - 150 mm

A: 350 - 1850 mm
B: 150 - 1200 mm
C: 30 - 150 mm



www.dgm-global.com

info@dgm-global.com

TEL (86) 0752-277 37 80

FAX (86) 0752-277 37 78

HuiHuan Industrial Area, Huizhou City,
Guangdong Province, China

Huizhou De Gang Machinery Co., Ltd

